

FEKABOX 280

PREDISPOSTA PER
FEKA 600 MA
FEKA VS 550-750 M-A
FEKA VX 550-750 M-A
FEKA VS 1000-1200 M-A
FEKA VX 1000-1200 M-A



GENERAL DATA

Applications

Automatic collecting and lifting station, ideal for collection and pumping to sewers of sewerage and domestic/industrial drains from basements located below the level of the sewer network.

Compatible liquids

Ground water, stormwater, clear wastewater, foul wastewater, river water and lake water.

Construction features

FEKABOX 280 is composed of a high density polyethylene tank having an effective capacity of 280 litres, with a trafficable cover complete with gasket that provides an effective gas and liquid seal, a DSD-2 device complete with base elbow, skid, pipes guide plate with drop pipes and hydraulic unions kit for connection of the pump to the sewer system.

Complete with special cable gland, DN50 and DN110 liquid inlet manifolds and 2" outlet. Complete with DN50 breather pipe connection. The use of an alarm float switch is possible on request.

Prearranged for operation of an automatic electric pump (see models in diagram) to be ordered separately. If to be used with VS or VX electric pump models order the bracket for the DSD2 device separately

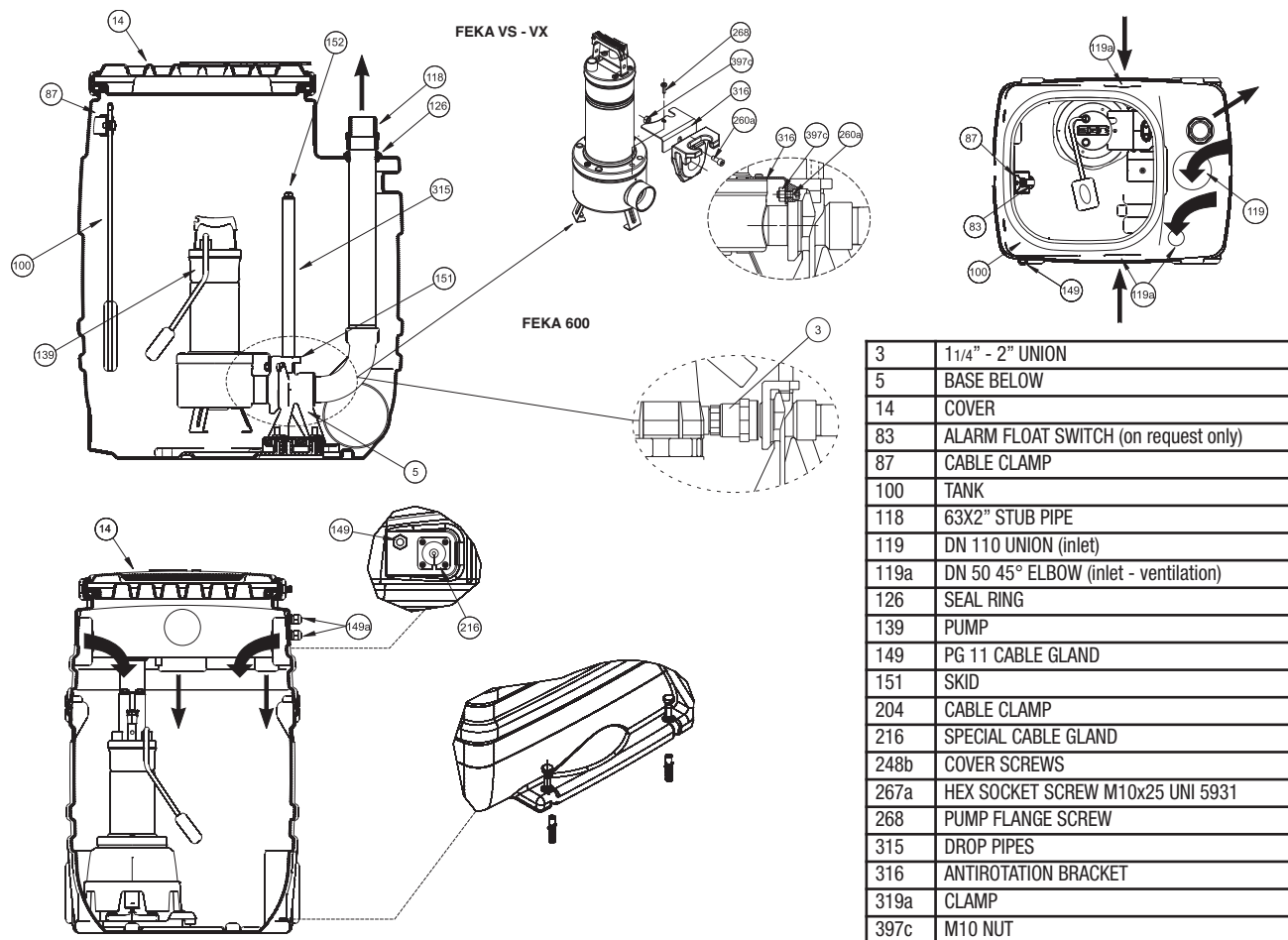
Supply

The station is supplied in a robust carton on a pallet and is complete with instruction leaflet for installation and maintenance.

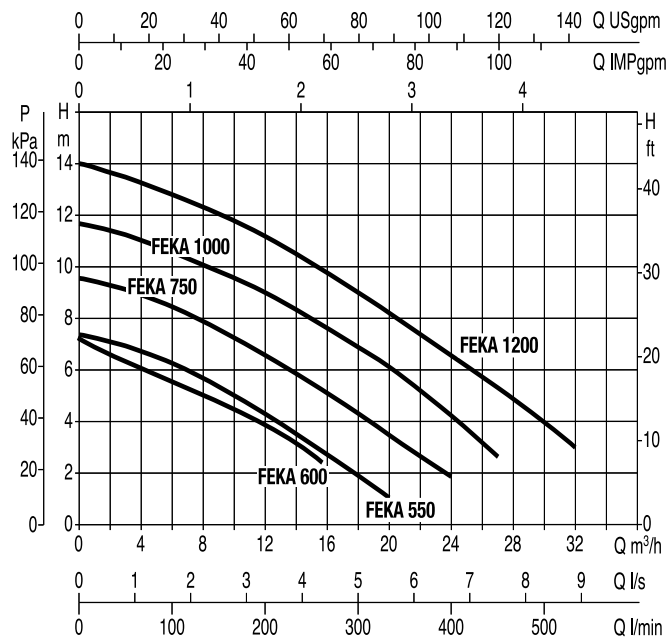
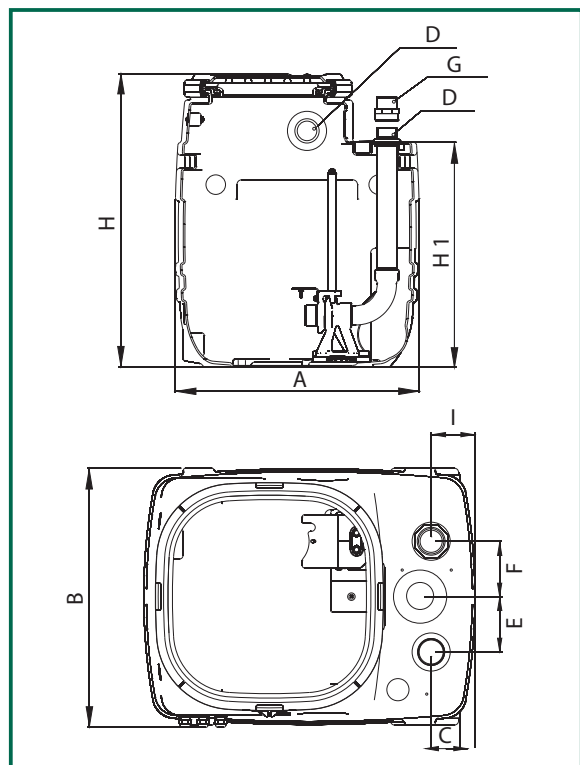
A float switch cable clamp kit is supplied (clamp secured to motor sleeve and adjustable in height)

TECHNICAL DATA

- | | |
|-------------------------------|--|
| - Operating range: | from 1 to 24 m ³ /h with head of up to 9 m. |
| - Maximum liquid temperature: | +50°C |



The performance curves are based on kinematic viscosity values = 1 mm²/s and density equivalent to 1000 kg/m³. Tolerance of curves to ISO 9906.



MODEL	A	B	C	D	E	F	G	H	H1	I	WEIGHT Kg
FEKABOX 280	750	585	99	DN 50/110	125	125	2" - Ø 63	900	690	99	34